



Glebe Street, London
Guide Price £1,200,000

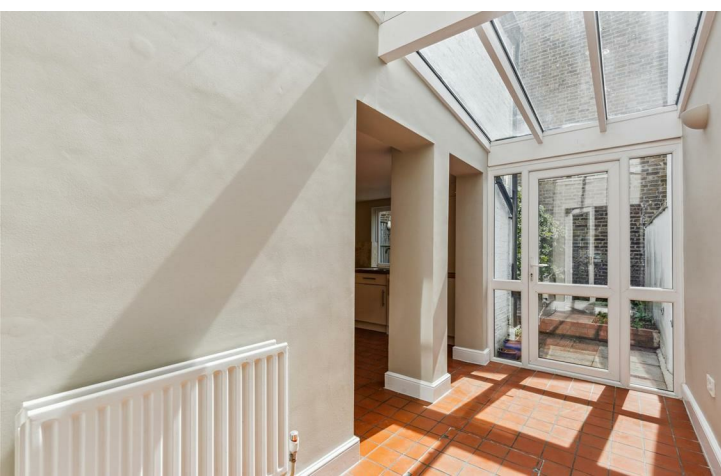
WHITMAN & CO.

SALES · LETTINGS · COMMERCIAL



A charming three-bedroom period cottage, ideally positioned in the highly sought-after Glebe Estate and benefiting from a south-facing garden. The property offers three bedrooms, a spacious loft, a modern bathroom, a generous 22' through reception room, a fully fitted kitchen/breakfast room, and a guest cloakroom.

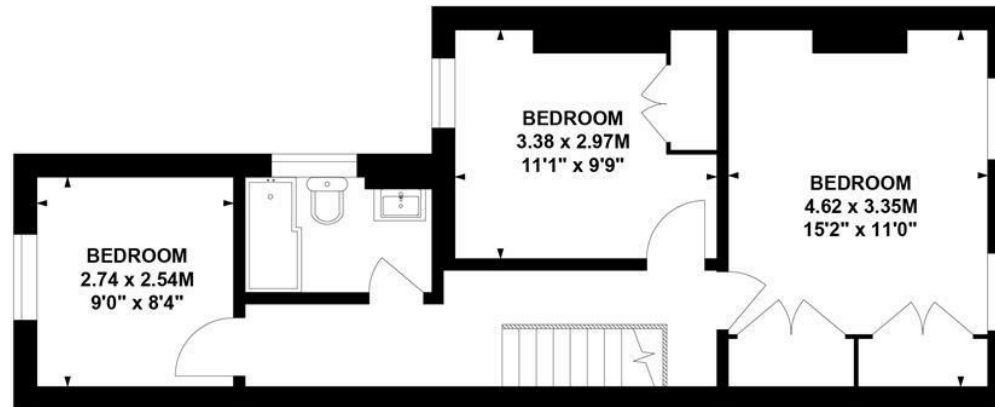
Perfectly located within close proximity to Turnham Green Tube Station and the wide array of shops, bars, and restaurants along Chiswick High Road. Offered with no onward chain.



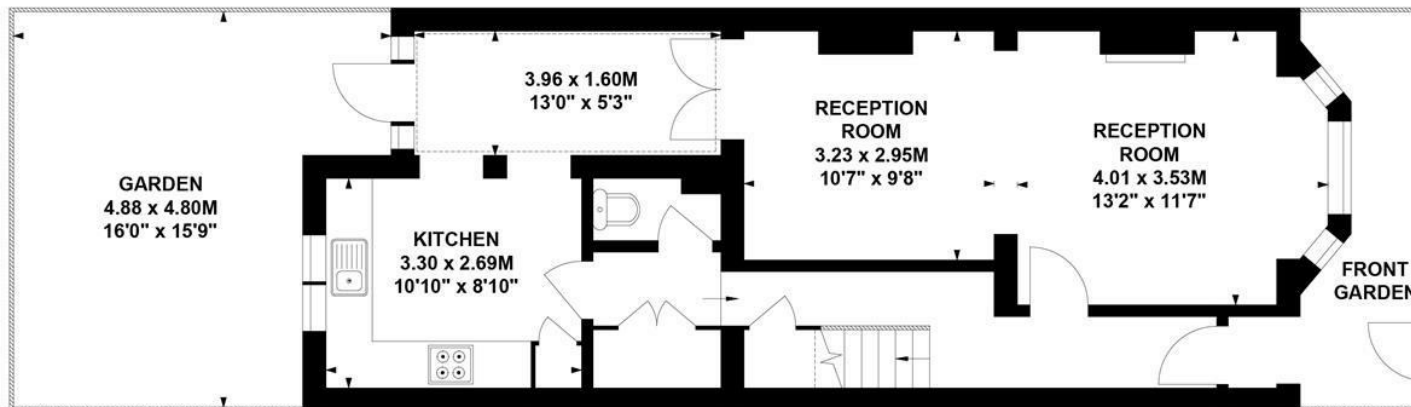
Glebe Street, W4

Approximate Gross Internal Area
100.7 sq m / 1084 sq ft

Key :
CH - Ceiling Height



First Floor



Ground Floor

Not to scale, for guidance only and must not be relied upon as a statement of fact.
All measurements and areas are approximate only

- Popular Glebe Estate
- Large loft
- Fantastic transport links

- Three bedrooms
- South-facing garden
- No onward chain

Tenure - Freehold
Local Authority - Hounslow
Council Tax - Band F

